

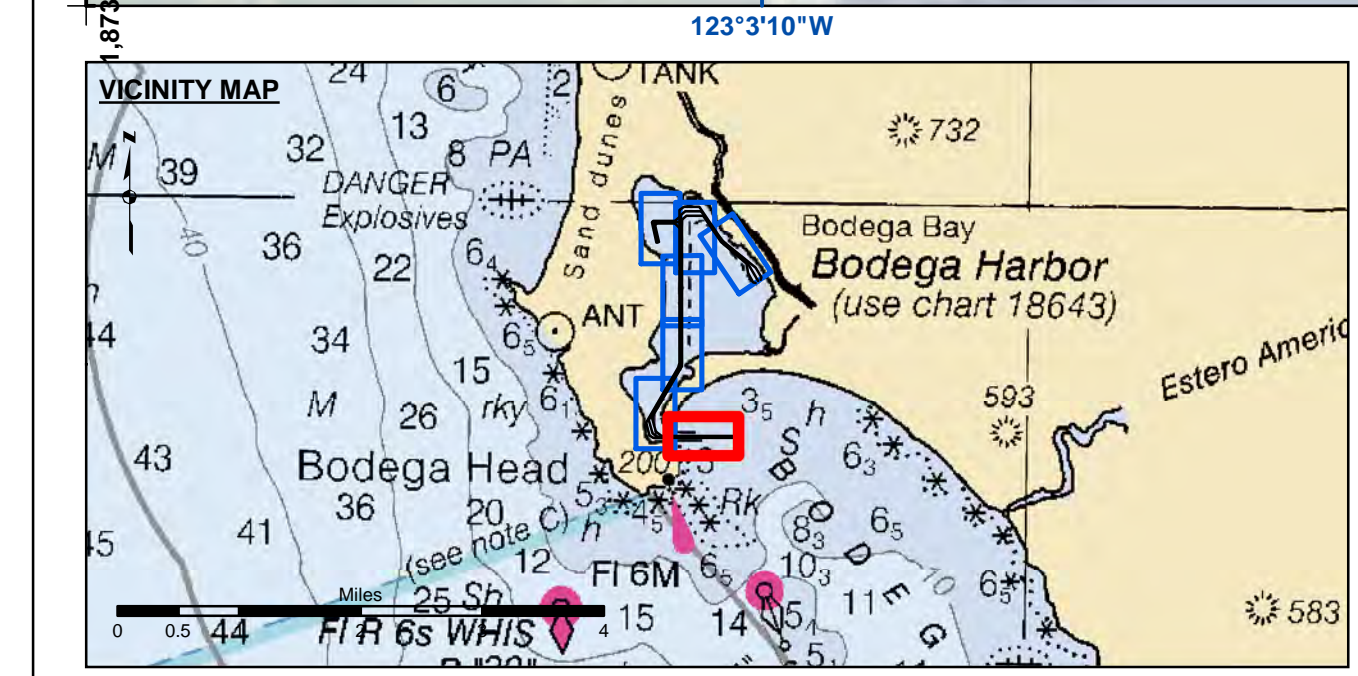
NAD 83 CHANNEL ANGLE POINTS		
△ PT	X	Y
1	6262013.56	1874718.23
2	6258560.66	1874718.23
3	6258402.46	1874840.43
4	6258258.06	1875392.73
5	6259660.46	1877792.03
6	6259710.96	1877978.33
7	6259710.96	1884605.43
8	6259910.96	1884755.43
9	6260578.56	1884755.43
10	6261582.56	1883294.43
11	6263009.76	1882104.53
12	6263256.76	1881692.93
13	6263229.26	1881583.13
14	6263023.46	1881459.73
15	6262913.76	1881487.13
16	6262668.76	1881898.73
17	6262623.46	1882296.43
18	6261507.96	1883226.43
19	6260732.16	1884355.43
20	6260010.96	1884355.43
21	6259810.96	1884205.43
22	6259810.96	1877651.23
23	6258508.16	1875622.33
24	6258666.86	1875015.23
25	6258921.96	1874818.23
26	6262013.56	1874818.23

NAD 83 CENTERLINE ANGLE POINTS		
△ PT	X	Y
C1	6262013.56	1874768.23
C2	6258741.36	1874772.73
C3	6258534.66	1874927.83
C4	6258383.16	1875507.53
C5	6259760.96	1877864.73
C6	6259760.96	1884405.43
C7	6259960.96	1884555.43
C8	6260655.36	1884555.43
C9	6261545.26	1883260.43
C10	6262655.46	1882334.83
C11	6263126.36	1881521.43

**PRELIMINARY ISSUE**  
THIS PLAN ISSUED FOR  
ADVANCE INFORMATION ONLY



**DISCLAIMER**  
The United States Government furnishes this information for the general information of the recipient. The recipient may not transfer this information to others without also transferring this disclaimer. The data represents the results of data collected by the United States Government. The United States Government makes no warranty, expressed or implied, concerning the accuracy, completeness, or reliability of the data. The user is responsible for the results of any application of the data for other than its intended purpose. The United States Government is not liable for any damage or loss resulting from the use of this information.



- Federal Navigation Channel
  - Shoaling Area
  - Placement Area
  - Anchorage Area
  - Wreck Area
  - Submerged Wreck
  - Angle Point
  - Beacon, General
  - Obstruction Point
  - Navigation Buoy
  - Navigation Buoy
  - Shoalest Sounding\*
- Contours**
- 12
  - 11
  - 10
  - 9
  - 8

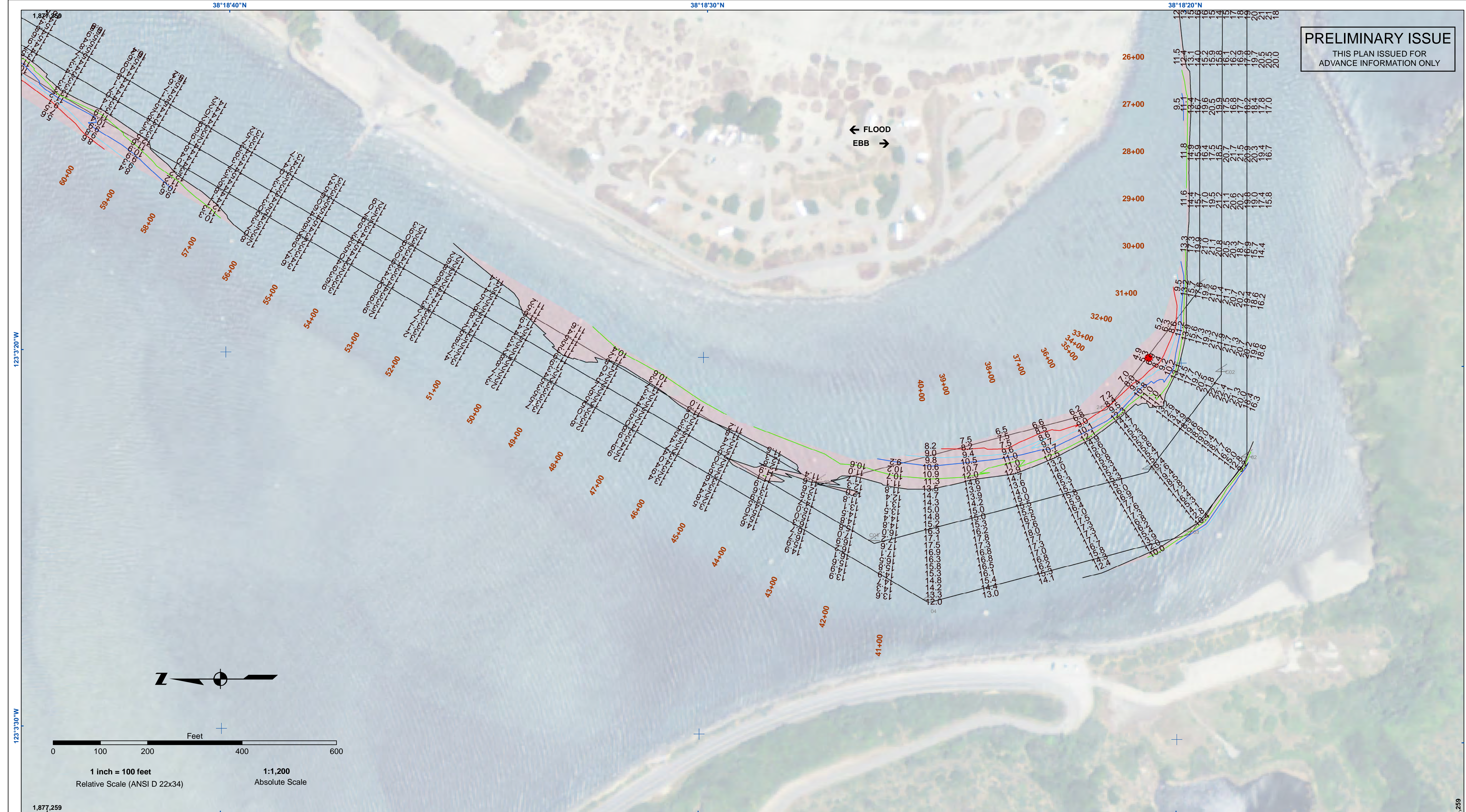
**NOTES:**  
HORIZONTAL COORDINATE SYSTEM:  
NORTH AMERICAN DATUM OF 1983 (NAD83), PROJECTED TO THE STATE PLANE COORDINATE SYSTEM (SPCS), CALIFORNIA ZONE II. DISTANCE UNITS IN U.S. SURVEY FEET.  
VERTICAL DATUM:  
SOUNDINGS ARE SHOWN IN FEET AND INDICATE DEPTHS BELOW MEAN LOWER LOW WATER.  
THE INFORMATION DEPICTED ON THIS MAP REPRESENTS THE RESULTS OF A SURVEY CONDUCTED ON THE DATE INDICATED AND CAN ONLY BE CONSIDERED TO REPRESENT THE GENERAL CONDITION EXISTING AT THAT TIME.  
PLANE GRID, BEARING AND COORDINATES ARE BASED ON THE STATE OF CALIFORNIA COORDINATE SYSTEM.  
LAMBERT CONFORMAL PROJECTION, ZONE II NAD 83, CALIFORNIA, AS DESCRIBED IN SPECIAL PUBLICATION NO. 235, PUBLISHED BY NATIONAL OCEAN SURVEY.  
BASE MAPS ARE USDA NAIP 2010.  
\*SHOALEST SOUNDING PER QUARTER PER REACH

DRAWING NOT TO BE USED FOR NAVIGATION. ONLY CHANNEL CONDITION AT DATE OF SURVEY. THE LOCATION OF ALL NAVIGATION AIDS ARE BASED ON INFORMATION PROVIDED BY THE U.S. COAST GUARD. BUOY LOCATIONS REPRESENT THE POSITION OF THE SINKER ONLY.  
SURVEYED BY THE CORPS OF ENGINEERS.  
SOUNDING FOR THE CHANNEL MEASURED WITH MULTIBEAM ECHOSOUNDER AND ARE SHOWN TO THE NEAREST TENTH FOOT.  
SOUNDINGS ARE BASED ON THE DATUM OF MEAN LOWER LOW WATER AT THE LOCALITY.  
THE PROJECT DEPTH IS 12 FEET.  
TIDE GAUGE AT BODEGA BAY COAST GUARD STATION DOCK BASED ON ELEVATION OF 17.55' MLLW ON COAST GUARD BRASS CAP PROPERTY CORNER. ELEVATION ESTABLISHED BY DIFFERENTIAL LEVELS RUN FROM "TIDAL 4 = ROAD" USED, 1941, ELEVATION 20.05' MLLW LOCATED IN THE TOWN OF BODEGA BAY.

Prepared Under the Direction of <b>TIMOTHY W. SHEBESTA</b> LT COLONEL, C.E., DISTRICT ENGINEER	Chart Date: Oct 25, 2023
Subplot: Hydro Survey Team Leader	Designed by: PDT
Recommended: Chief, Hydro Survey Section	Drawn by: PDT
Approved: Chief, Construction Branch	

CALIFORNIA  
SONOMA COUNTY  
**BODEGA BAY CHANNEL**  
CONDITION SURVEY  
20 OCTOBER 2023

**Sheet**  
**Reference**  
**Number**  
**1 of 7**



**PRELIMINARY ISSUE**  
THIS PLAN ISSUED FOR  
ADVANCE INFORMATION ONLY

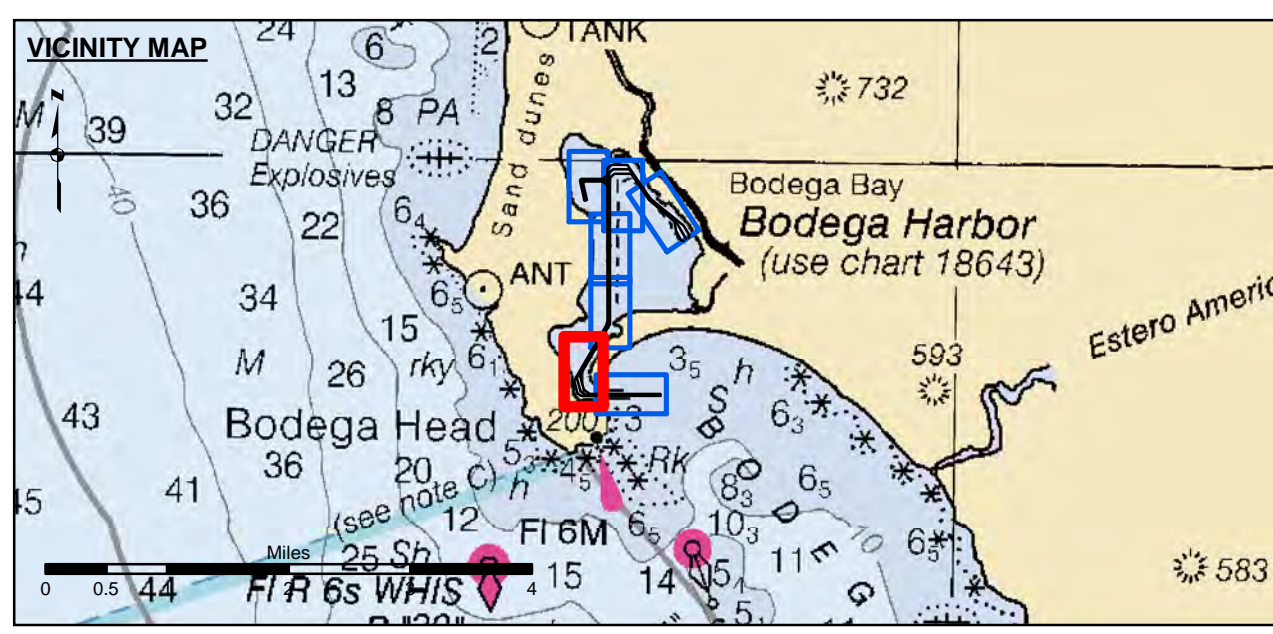
**US Army Corps of Engineers**  
San Francisco District  
450 Golden Gate Avenue  
San Francisco, CA 94102

**DISCLAIMER**  
The United States Government furnishes this information for the purpose of providing accurate and reliable data. The user is responsible for the results of any application of the data for other than its intended purpose. The United States Government makes no warranties, expressed or implied, concerning the accuracy, completeness, or reliability of the information furnished. The user is responsible for the results of any application of the data for other than its intended purpose. These data belong to the Government. Therefore, the user is prohibited from transferring these data to others without also transferring this disclaimer.

Prepared Under the Direction of <b>TIMOTHY W. SHEBESTA</b> LT COLONEL, C.E., DISTRICT ENGINEER	Chart Date: Oct 25, 2023
Submitted: Hydro Survey Team Leader	Designed by: PDT
Recommended by: Chief, Hydro Survey Section	Checked by: PDT
Approved: Chief, Construction Branch	Drawn by: PDT

SONOMA COUNTY  
CALIFORNIA  
**BODEGA BAY CHANNEL**  
CONDITION SURVEY  
20 OCTOBER 2023

**Sheet**  
Reference  
Number  
**2 of 7**



- |                            |                    |                 |
|----------------------------|--------------------|-----------------|
| Federal Navigation Channel | Beacon, General    | <b>Contours</b> |
| Shoaling Area              | Obstruction Point  | -12             |
| Placement Area             | Navigation Buoy    | -11             |
| Anchorage Area             | Navigation Buoy    | -10             |
| Wreck Area                 | Shoalest Sounding* | -9              |
| Submerged Wreck            |                    | -8              |
| Angle Point                |                    |                 |

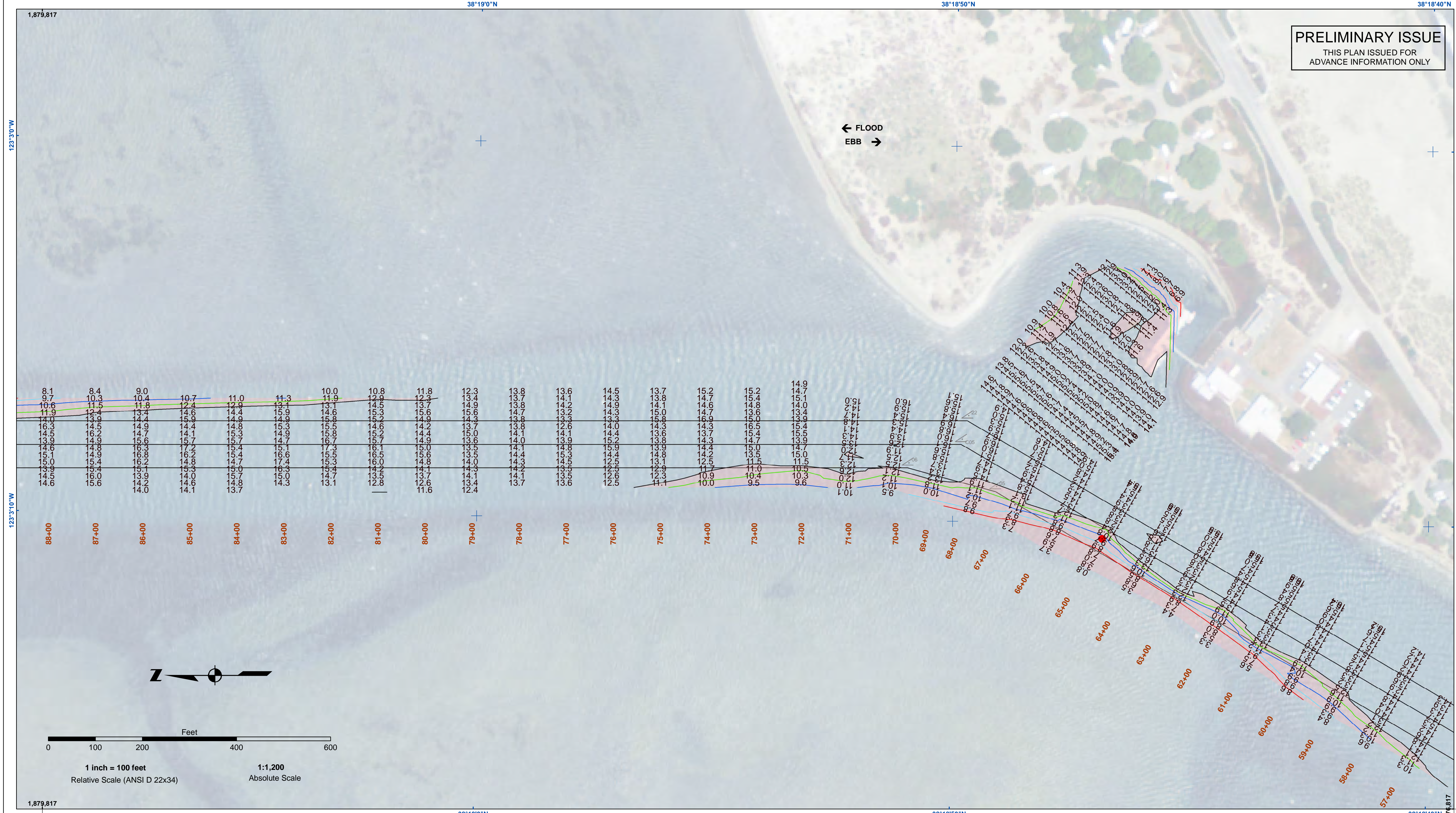
**NOTES:**  
HORIZONTAL COORDINATE SYSTEM:  
NORTH AMERICAN DATUM OF 1983 (NAD83), PROJECTED TO THE STATE PLANE COORDINATE SYSTEM (SPCS), CALIFORNIA ZONE II. DISTANCE UNITS IN U.S. SURVEY FEET.  
VERTICAL DATUM:  
SOUNDINGS ARE SHOWN IN FEET AND INDICATE DEPTHS BELOW MEAN LOWER LOW WATER.  
THE INFORMATION DEPICTED ON THIS MAP REPRESENTS THE RESULTS OF A SURVEY CONDUCTED ON THE DATE INDICATED AND CAN ONLY BE CONSIDERED TO REPRESENT THE GENERAL CONDITION EXISTING AT THAT TIME.  
PLANE GRID, BEARING AND COORDINATES ARE BASED ON THE STATE OF CALIFORNIA COORDINATE SYSTEM, LAMBERT CONFORMAL PROJECTION, ZONE II NAD 83, CALIFORNIA, AS DESCRIBED IN SPECIAL PUBLICATION NO. 235, PUBLISHED BY NATIONAL OCEAN SURVEY. BASE MAPS ARE USDA NAIP 2010.  
\*SHOALEST SOUNDING PER QUARTER PER REACH

DRAWING NOT TO BE USED FOR NAVIGATION. ONLY CHANNEL CONDITION AT DATE OF SURVEY. THE LOCATION OF ALL NAVIGATION AIDS ARE BASED ON INFORMATION PROVIDED BY THE U.S. COAST GUARD. BUOY LOCATIONS REPRESENT THE POSITION OF THE SINKER ONLY.  
SURVEYED BY THE CORPS OF ENGINEERS.  
SOUNDING FOR THE CHANNEL MEASURED WITH MULTIBEAM ECHOSOUNDER AND ARE SHOWN TO THE NEAREST TENTH FOOT.  
SOUNDINGS ARE BASED ON THE DATUM OF MEAN LOWER LOW WATER AT THE LOCALITY.  
THE PROJECT DEPTH IS 12 FEET.  
TIDE GAUGE AT BODEGA BAY COAST GUARD STATION DOCK BASED ON ELEVATION OF 17.59' MLLW ON COAST GUARD BRASS CAP PROPERTY CORNER. ELEVATION ESTABLISHED BY DIFFERENTIAL LEVELS RUN FROM "TIDAL 4 - ROAD" USED, 1941, ELEVATION 20.05' MLLW LOCATED IN THE TOWN OF BODEGA BAY.

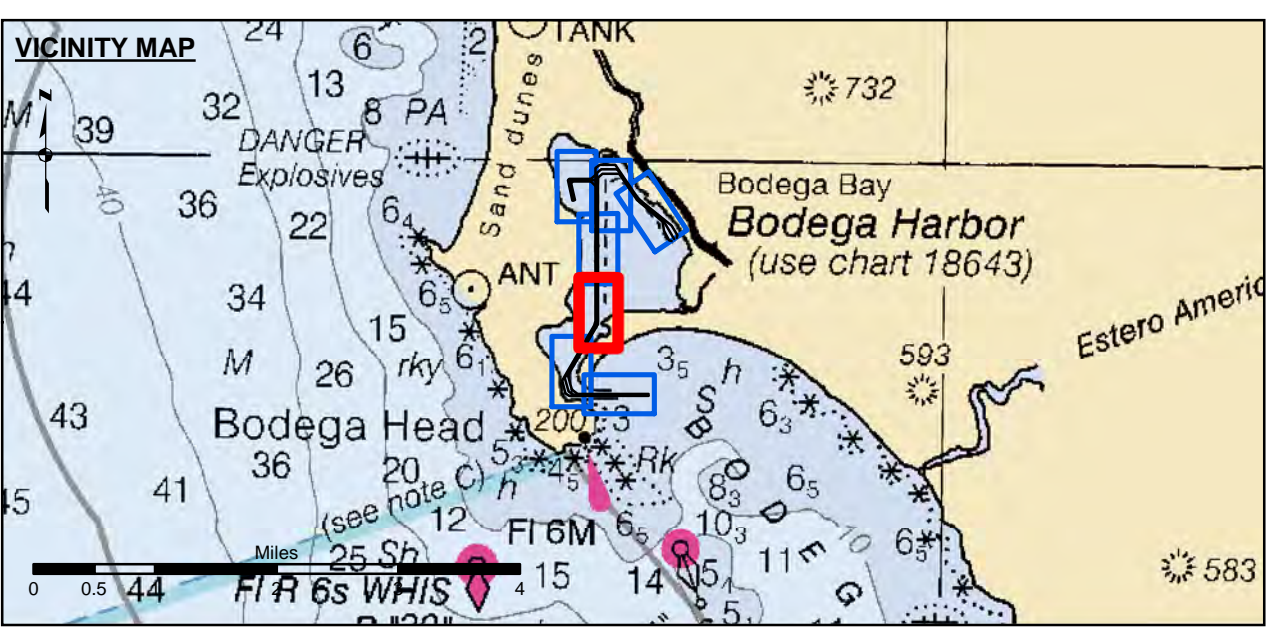
**PRELIMINARY ISSUE**  
THIS PLAN ISSUED FOR  
ADVANCE INFORMATION ONLY

**US Army Corps of Engineers**  
San Francisco District  
450 Golden Gate Avenue  
San Francisco, CA 94102

**DISCLAIMER**  
The United States Government furnishes this information for the purpose of providing advance information only. It is not intended to be used for any other purpose than the intended purpose. The user is responsible for the results of any application of the data for other than the intended purpose. The United States Government makes no warranty, expressed or implied, concerning the accuracy, completeness, or reliability of the information furnished. The user is responsible for the results of any application of the data for other than the intended purpose. These data belong to the Government. Therefore, the recipient may not transfer these data to others without also transferring this disclaimer.



Prepared Under the Direction of <b>TIMOTHY W. SHEBESTA</b> LT COLONEL, C.E., DISTRICT ENGINEER	Chart Date: Oct 25, 2023
Submittal: Hydro Survey Team Leader	Designed by: PDT
Recommendation: Chief, Hydro Survey Section	Checked by: PDT
Approved: Chief, Construction Branch	Drawn by: PDT



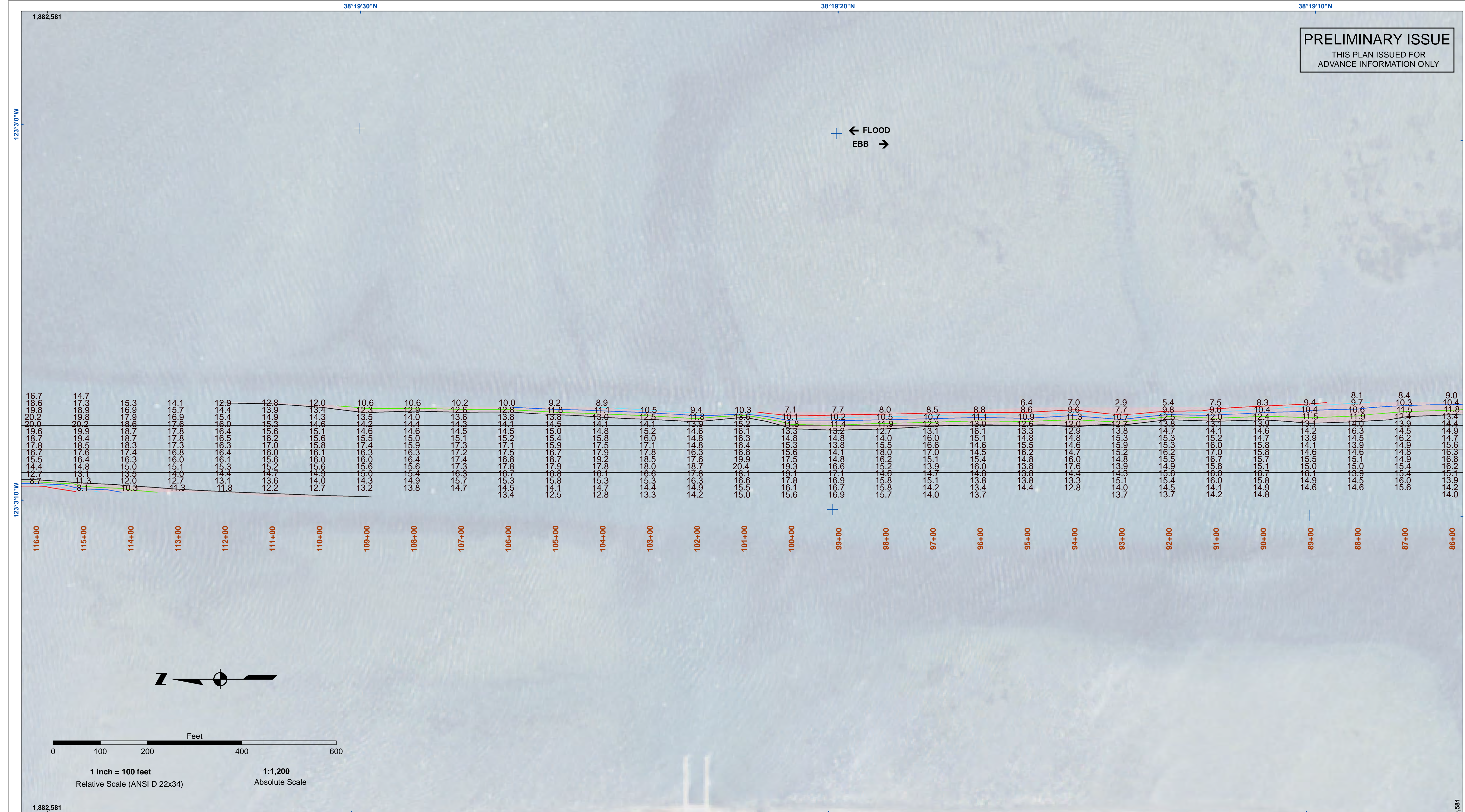
- Federal Navigation Channel
- Shoaling Area
- Placement Area
- Anchorage Area
- Wreck Area
- Submerged Wreck
- Angle Point
- Beacon, General
- Obstruction Point
- Navigation Buoy
- Navigation Buoy
- Shoalest Sounding\*
- Contours**
- 12
- 11
- 10
- 9
- 8

**NOTES:**  
HORIZONTAL COORDINATE SYSTEM:  
NORTH AMERICAN DATUM OF 1983 (NAD83), PROJECTED TO THE STATE PLANE COORDINATE SYSTEM (SPCS), CALIFORNIA ZONE II. DISTANCE UNITS IN U.S. SURVEY FEET.  
VERTICAL DATUM:  
SOUNDINGS ARE SHOWN IN FEET AND INDICATE DEPTHS BELOW MEAN LOWER LOW WATER.  
THE INFORMATION DEPICTED ON THIS MAP REPRESENTS THE RESULTS OF A SURVEY CONDUCTED ON THE DATE INDICATED AND CAN ONLY BE CONSIDERED TO REPRESENT THE GENERAL CONDITION EXISTING AT THAT TIME.  
PLANE GRID, BEARING AND COORDINATES ARE BASED ON THE STATE OF CALIFORNIA COORDINATE SYSTEM, LAMBERT CONFORMAL PROJECTION, ZONE II NAD 83, CALIFORNIA, AS DESCRIBED IN SPECIAL PUBLICATION NO. 235, PUBLISHED BY NATIONAL OCEAN SURVEY.  
BASE MAPS ARE USDA NAIP 2010.  
\*SHOALEST SOUNDING PER QUARTER PER REACH

DRAWING NOT TO BE USED FOR NAVIGATION. ONLY CHANNEL CONDITION AT DATE OF SURVEY. THE LOCATION OF ALL NAVIGATION AIDS ARE BASED ON INFORMATION PROVIDED BY THE U.S. COAST GUARD. BUOY LOCATIONS REPRESENT THE POSITION OF THE SINKER ONLY.  
SURVEYED BY THE CORPS OF ENGINEERS.  
SOUNDING FOR THE CHANNEL MEASURED WITH MULTIBEAM ECHOSOUNDER AND ARE SHOWN TO THE NEAREST TENTH FOOT.  
SOUNDINGS ARE BASED ON THE DATUM OF MEAN LOWER LOW WATER AT THE LOCALITY.  
THE PROJECT DEPTH IS 12 FEET.  
TIDE GAUGE AT BODEGA BAY COAST GUARD STATION DOCK BASED ON ELEVATION OF 17.55' MLLW ON COAST GUARD BRASS CAP PROPERTY CORNER. ELEVATION ESTABLISHED BY DIFFERENTIAL LEVELS RUN FROM "TIDAL 4 - ROAD" USED, 1941, ELEVATION 20.05' MLLW LOCATED IN THE TOWN OF BODEGA BAY.

**CALIFORNIA**  
SONOMA COUNTY  
**BODEGA BAY CHANNEL**  
CONDITION SURVEY  
20 OCTOBER 2023

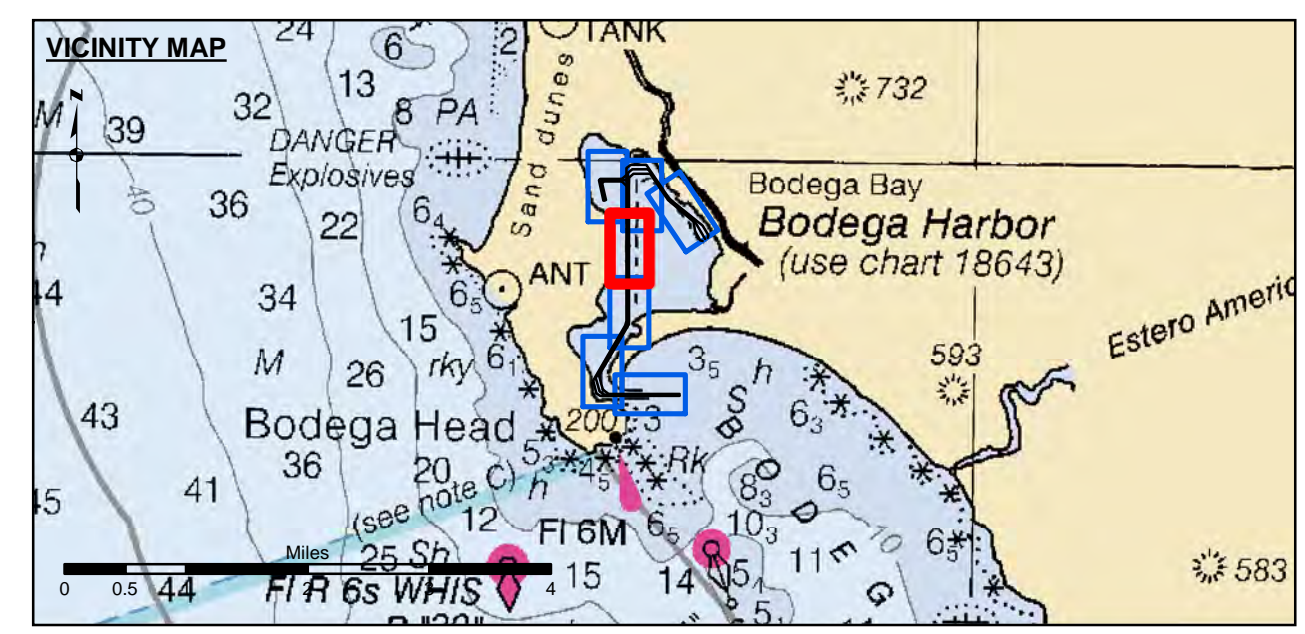
**Sheet**  
**Reference**  
**Number**  
**3 of 7**



**PRELIMINARY ISSUE**  
THIS PLAN ISSUED FOR  
ADVANCE INFORMATION ONLY

**US Army Corps of Engineers**  
San Francisco District  
450 Golden Gate Avenue  
San Francisco, CA 94102

**DISCLAIMER**  
The United States Government furnishes these data for informational purposes only. It is not intended to be used for navigation. The user is responsible for the accuracy of the data for other than its intended purpose. The United States Government makes no warranty, expressed or implied, concerning the accuracy, completeness, or reliability of the data. The user is responsible for the accuracy of the data for other than its intended purpose. The United States Government makes no warranty, expressed or implied, concerning the accuracy, completeness, or reliability of the data. The user is responsible for the accuracy of the data for other than its intended purpose.



- Federal Navigation Channel
- Shoaling Area
- Placement Area
- Anchorage Area
- Wreck Area
- Submerged Wreck
- Angle Point
- Beacon, General
- Obstruction Point
- Navigation Buoy
- Navigation Buoy
- Shoalest Sounding\*
- Contours**
- 12
- 11
- 10
- 9
- 8

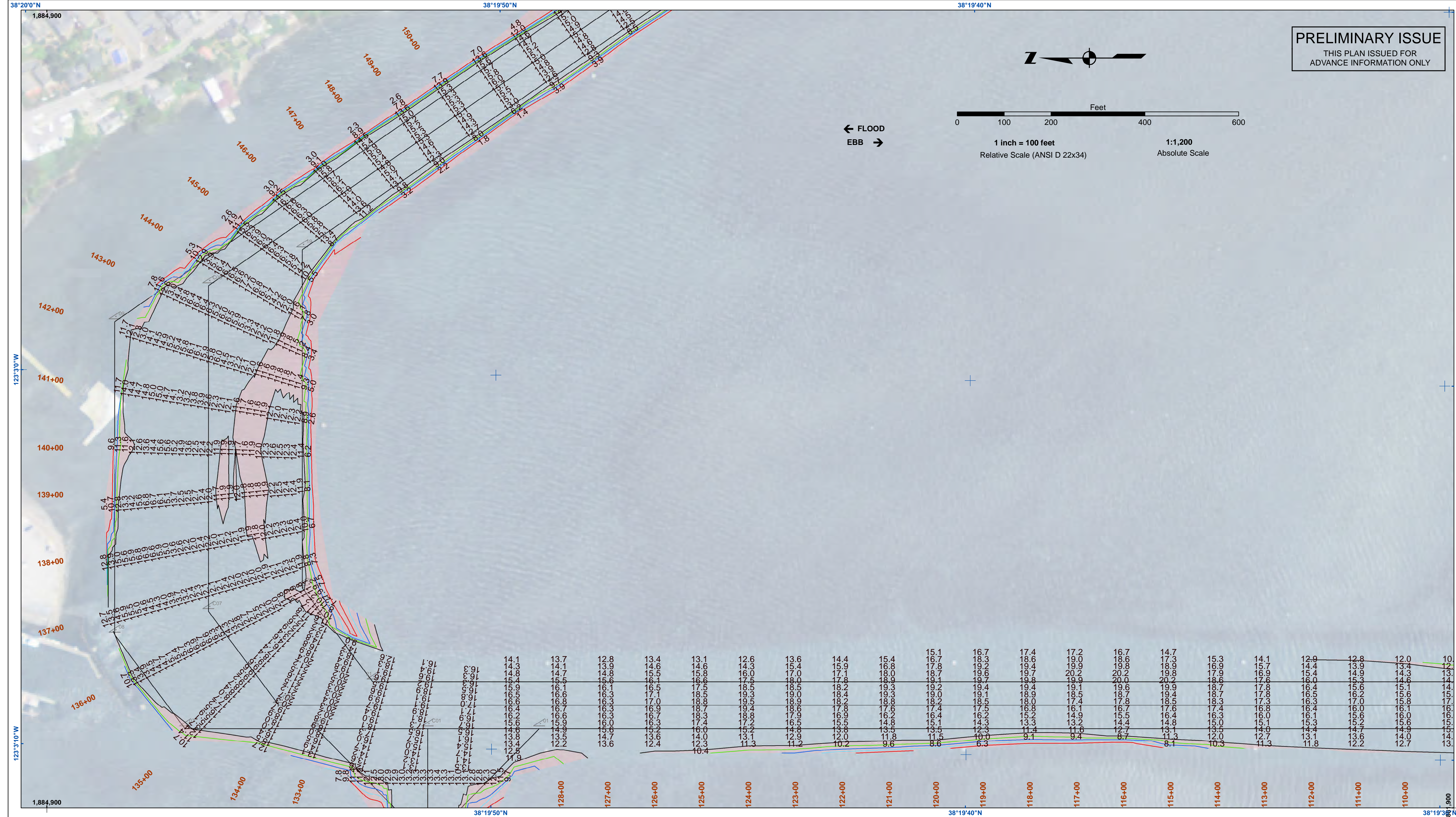
**NOTES:**  
HORIZONTAL COORDINATE SYSTEM: NORTH AMERICAN DATUM OF 1983 (NAD83), PROJECTED TO THE STATE PLANE COORDINATE SYSTEM (SPCS), CALIFORNIA ZONE II. DISTANCE UNITS IN U.S. SURVEY FEET.  
VERTICAL DATUM: SOUNDINGS ARE SHOWN IN FEET AND INDICATE DEPTHS BELOW MEAN LOWER LOW WATER.  
THE INFORMATION DEPICTED ON THIS MAP REPRESENTS THE RESULTS OF A SURVEY CONDUCTED ON THE DATE INDICATED AND CAN ONLY BE CONSIDERED TO REPRESENT THE GENERAL CONDITION EXISTING AT THAT TIME.  
PLANE GRID, BEARING AND COORDINATES ARE BASED ON THE STATE OF CALIFORNIA COORDINATE SYSTEM, LAMBERT CONFORMAL PROJECTION, ZONE II NAD 83, CALIFORNIA, AS DESCRIBED IN SPECIAL PUBLICATION NO. 235, PUBLISHED BY NATIONAL OCEAN SURVEY. BASE MAPS ARE USDA NAIP 2010.  
\*SHOALEST SOUNDING PER QUARTER PER REACH

DRAWING NOT TO BE USED FOR NAVIGATION. ONLY CHANNEL CONDITION AT DATE OF SURVEY. THE LOCATION OF ALL NAVIGATION AIDS ARE BASED ON INFORMATION PROVIDED BY THE U.S. COAST GUARD. BUOY LOCATIONS REPRESENT THE POSITION OF THE SINKER ONLY.  
SURVEYED BY THE CORPS OF ENGINEERS.  
SOUNDING FOR THE CHANNEL MEASURED WITH MULTIBEAM ECHOSOUNDER AND ARE SHOWN TO THE NEAREST TENTH FOOT.  
SOUNDINGS ARE BASED ON THE DATUM OF MEAN LOWER LOW WATER AT THE LOCALITY.  
THE PROJECT DEPTH IS 12 FEET.  
TIDE GAUGE AT BODEGA BAY COAST GUARD STATION DOCK BASED ON ELEVATION OF 17.59' MLLW ON COAST GUARD BRASS CAP PROPERTY CORNER. ELEVATION ESTABLISHED BY DIFFERENTIAL LEVELS RUN FROM "TIDAL 4 = ROAD" USED, 1941, ELEVATION 20.05' MLLW LOCATED IN THE TOWN OF BODEGA BAY.

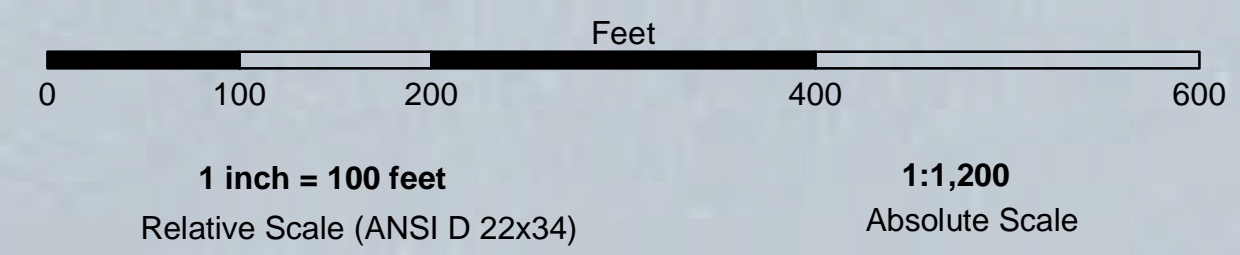
PREPARED UNDER THE DIRECTION OF <b>TIMOTHY W. SHEBESTA</b> LT COLONEL, C.E., DISTRICT ENGINEER	Surveyed By:	Chart Date:
Submitted: Hydro Survey Team Leader	Plotted By:	Oct 25, 2023
Recommended: Chief, Hydro Survey Section	Checked By:	Designed by:
Approved: Chief, Construction Branch	PDT	Drawn by:
	PDT	PDT

CALIFORNIA  
SONOMA COUNTY  
**BODEGA BAY CHANNEL**  
CONDITION SURVEY  
20 OCTOBER 2023

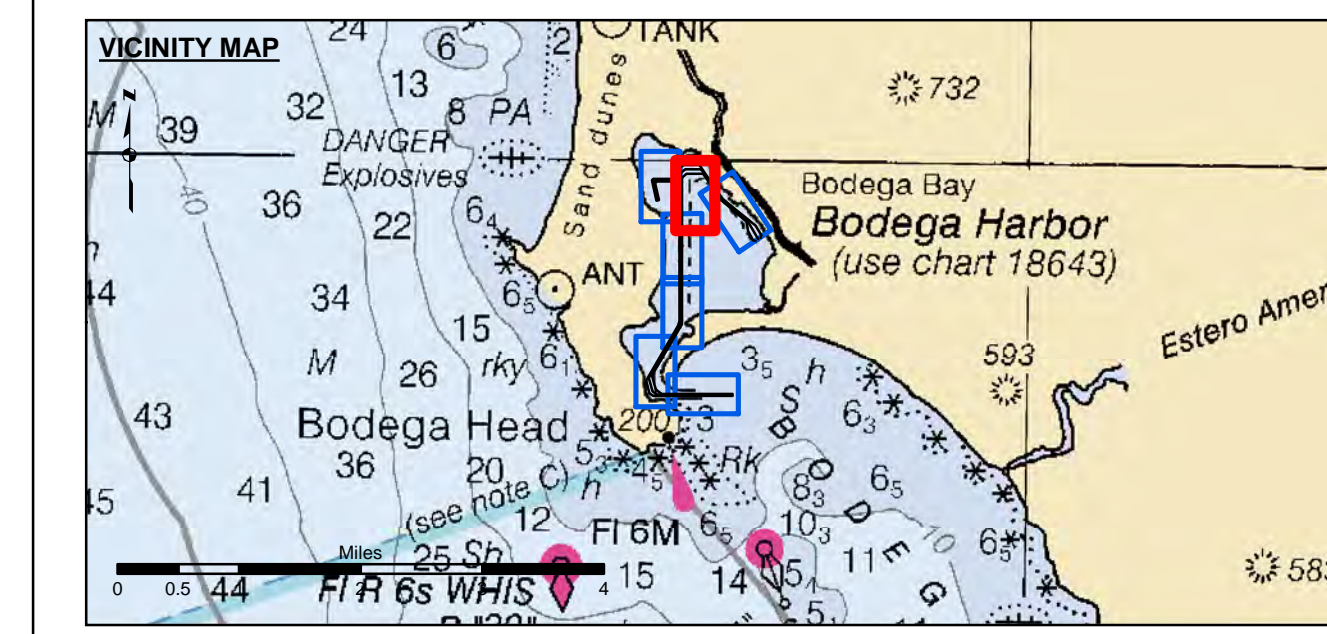
**Sheet**  
**Reference**  
**Number**  
**4 of 7**



**PRELIMINARY ISSUE**  
THIS PLAN ISSUED FOR  
ADVANCE INFORMATION ONLY



← FLOOD  
EBB →



- |                            |                    |                 |
|----------------------------|--------------------|-----------------|
| Federal Navigation Channel | Beacon, General    | <b>Contours</b> |
| Shoaling Area              | Obstruction Point  | -12             |
| Placement Area             | Navigation Buoy    | -11             |
| Anchorage Area             | Navigation Buoy    | -10             |
| Wreck Area                 | Shoalest Sounding* | -9              |
| Submerged Wreck            |                    | -8              |
| Angle Point                |                    |                 |

**NOTES:**  
HORIZONTAL COORDINATE SYSTEM:  
NORTH AMERICAN DATUM OF 1983 (NAD83), PROJECTED TO THE STATE PLANE COORDINATE SYSTEM (SPCS), CALIFORNIA ZONE II. DISTANCE UNITS IN U.S. SURVEY FEET.  
VERTICAL DATUM:  
SOUNDINGS ARE SHOWN IN FEET AND INDICATE DEPTHS BELOW MEAN LOWER LOW WATER.  
THE INFORMATION DEPICTED ON THIS MAP REPRESENTS THE RESULTS OF A SURVEY CONDUCTED ON THE DATE INDICATED AND CAN ONLY BE CONSIDERED TO REPRESENT THE GENERAL CONDITION EXISTING AT THAT TIME.  
PLANE GRID, BEARING AND COORDINATES ARE BASED ON THE STATE OF CALIFORNIA COORDINATE SYSTEM.  
LAMBERT CONFORMAL PROJECTION, ZONE II NAD 83, CALIFORNIA, AS DESCRIBED IN SPECIAL PUBLICATION NO. 235, PUBLISHED BY NATIONAL OCEAN SURVEY.  
BASE MAPS ARE USDA NAIP 2010.  
\*SHOALEST SOUNDING PER QUARTER PER REACH

DRAWING NOT TO BE USED FOR NAVIGATION. ONLY CHANNEL CONDITION AT DATE OF SURVEY. THE LOCATION OF ALL NAVIGATION AIDS ARE BASED ON INFORMATION PROVIDED BY THE U.S. COAST GUARD. BUOY LOCATIONS REPRESENT THE POSITION OF THE SINKER ONLY.  
SURVEYED BY THE CORPS OF ENGINEERS.  
SOUNDING FOR THE CHANNEL MEASURED WITH MULTIBEAM ECHOSOUNDER AND ARE SHOWN TO THE NEAREST TENTH FOOT.  
SOUNDINGS ARE BASED ON THE DATUM OF MEAN LOWER LOW WATER AT THE LOCALITY.  
THE PROJECT DEPTH IS 12 FEET.  
TIDE GAUGE AT BODEGA BAY COAST GUARD STATION DOCK BASED ON ELEVATION OF 17.59' MLLW ON COAST GUARD BRASS CAP PROPERTY CORNER. ELEVATION ESTABLISHED BY DIFFERENTIAL LEVELS RUN FROM "TIDAL 4 - ROAD" USED, 1941, ELEVATION 20.05' MLLW LOCATED IN THE TOWN OF BODEGA BAY.



**DISCLAIMER**  
The United States Government furnishes the information, including data furnished by the United States Government, under no liability whatsoever to any person by reason of any use made hereof. These data belong to the Government. Therefore the recipient may not transfer these data to others without also transferring this disclaimer.

Prepared Under the Direction of	Chart Date:
TIMOTHY W. SHEBESTA	Oct 25, 2023
Submittal:	Designed by:
Hydro Survey Team Leader	PDT
Recommended:	Plotted by:
Chief, Hydro Survey Section	PDT
Approved:	Checked by:
Chief, Construction Branch	PDT

CALIFORNIA  
SONOMA COUNTY  
BODEGA BAY CHANNEL  
CONDITION SURVEY  
20 OCTOBER 2023

Sheet  
Reference  
Number  
5 of 7

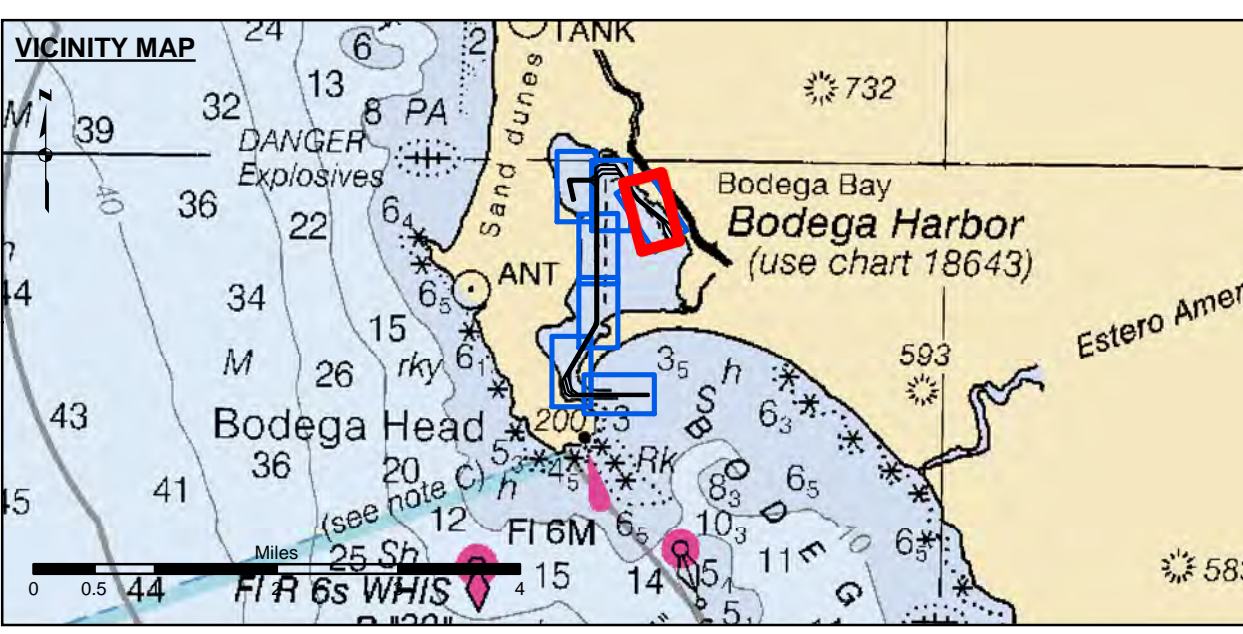
**PRELIMINARY ISSUE**  
THIS PLAN ISSUED FOR  
ADVANCE INFORMATION ONLY

**US Army Corps  
of Engineers**  
San Francisco District  
450 Golden Gate Avenue  
San Francisco, CA 94102



**DISCLAIMER**  
The United States Government furnishes this information for the purpose of providing accurate and reliable data for the user's information. The user is responsible for the results of any application of the data for other than its intended purpose. The user is responsible for the results of any application of the data for other than its intended purpose. The user is responsible for the results of any application of the data for other than its intended purpose.

Prepared Under the Direction of <b>TIMOTHY W. SHEBESTA</b> LT COLONEL, C.E., DISTRICT ENGINEER	Chart Date: Oct 25, 2023
Submitted: Hydro Survey Team Leader	Designed by: PDT
Recommended by: Chief, Hydro Survey Section	Plotted by: PDT
Approved: Chief, Construction Branch	Checked by: PDT
	Drawn by: PDT



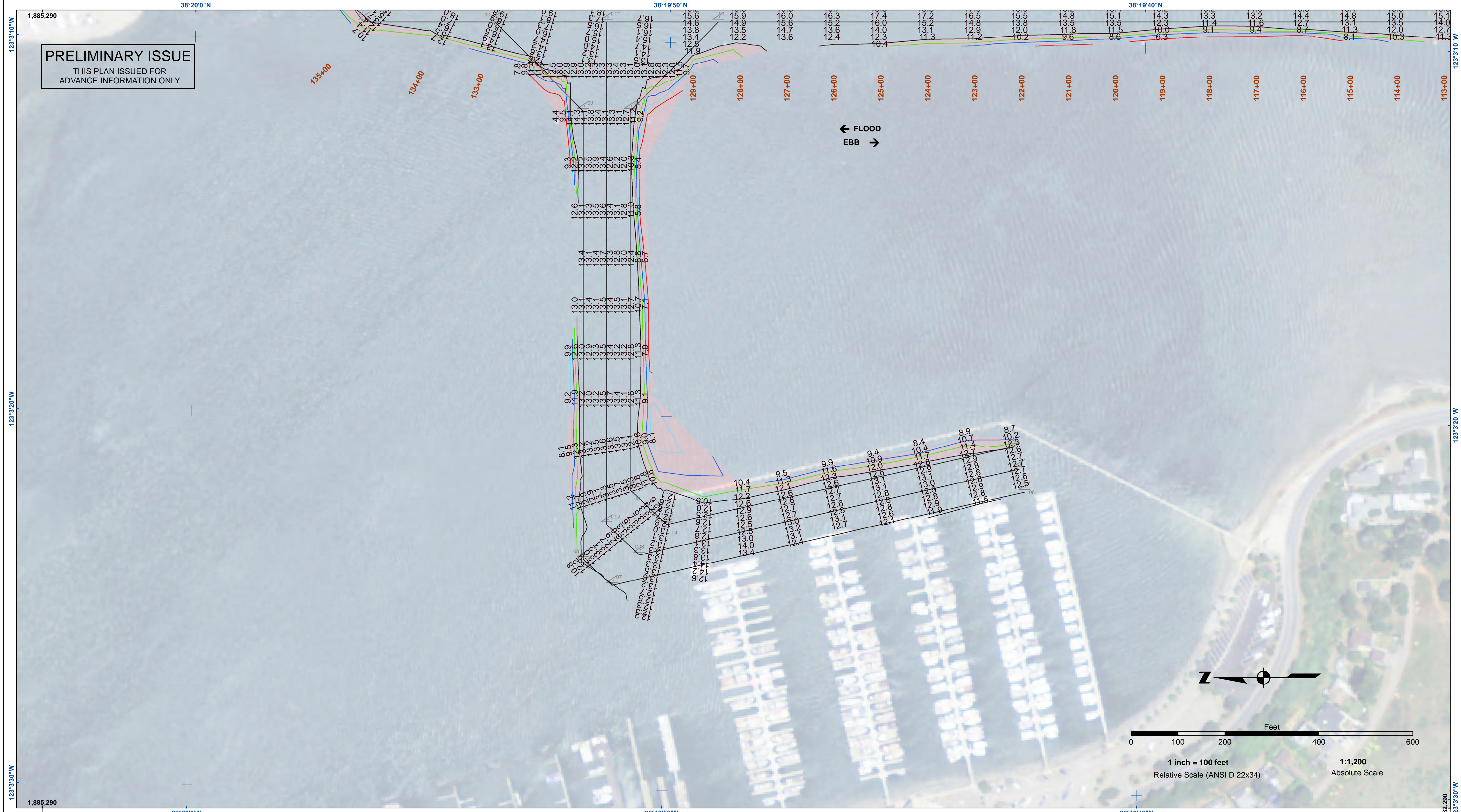
- |                            |                    |                 |
|----------------------------|--------------------|-----------------|
| Federal Navigation Channel | Beacon, General    | <b>Contours</b> |
| Shoaling Area              | Obstruction Point  |                 |
| Placement Area             | Navigation Buoy    | -12             |
| Anchorage Area             | Navigation Buoy    | -11             |
| Wreck Area                 | Shoalest Sounding* | -10             |
| Submerged Wreck            |                    | -9              |
| Angle Point                |                    | -8              |

**NOTES:**  
HORIZONTAL COORDINATE SYSTEM:  
NORTH AMERICAN DATUM OF 1983 (NAD83), PROJECTED TO THE STATE PLANE COORDINATE SYSTEM (SPCS), CALIFORNIA ZONE II. DISTANCE UNITS IN U.S. SURVEY FEET.  
VERTICAL DATUM:  
SOUNDINGS ARE SHOWN IN FEET AND INDICATE DEPTHS BELOW MEAN LOWER LOW WATER.  
THE INFORMATION DEPICTED ON THIS MAP REPRESENTS THE RESULTS OF A SURVEY CONDUCTED ON THE DATE INDICATED AND CAN ONLY BE CONSIDERED TO REPRESENT THE GENERAL CONDITION EXISTING AT THAT TIME.  
PLANE GRID, BEARING AND COORDINATES ARE BASED ON THE STATE OF CALIFORNIA COORDINATE SYSTEM.  
LAMBERT CONFORMAL PROJECTION, ZONE II NAD 83, CALIFORNIA, AS DESCRIBED IN SPECIAL PUBLICATION NO. 235, PUBLISHED BY NATIONAL OCEAN SURVEY.  
BASE MAPS ARE USDA NAIP 2010.  
\*SHOALEST SOUNDING PER QUARTER PER REACH

DRAWING NOT TO BE USED FOR NAVIGATION. ONLY CHANNEL CONDITION AT DATE OF SURVEY. THE LOCATION OF ALL NAVIGATION AIDS ARE BASED ON INFORMATION PROVIDED BY THE U.S. COAST GUARD. BUOY LOCATIONS REPRESENT THE POSITION OF THE SINKER ONLY.  
SURVEYED BY THE CORPS OF ENGINEERS.  
SOUNDING FOR THE CHANNEL MEASURED WITH MULTIBEAM ECHOSOUNDER AND ARE SHOWN TO THE NEAREST TENTH FOOT.  
SOUNDINGS ARE BASED ON THE DATUM OF MEAN LOWER LOW WATER AT THE LOCALITY.  
THE PROJECT DEPTH IS 12 FEET.  
TIDE GAUGE AT BODEGA BAY COAST GUARD STATION DOCK BASED ON ELEVATION OF 17.59' MLLW ON COAST GUARD BRASS CAP PROPERTY CORNER. ELEVATION ESTABLISHED BY DIFFERENTIAL LEVELS RUN FROM "TIDAL 4 - ROAD" USED, 1941, ELEVATION 20.05' MLLW LOCATED IN THE TOWN OF BODEGA BAY.

CALIFORNIA  
SONOMA COUNTY  
**BODEGA BAY CHANNEL**  
CONDITION SURVEY  
20 OCTOBER 2023

**Sheet  
Reference  
Number**  
**6 of 7**

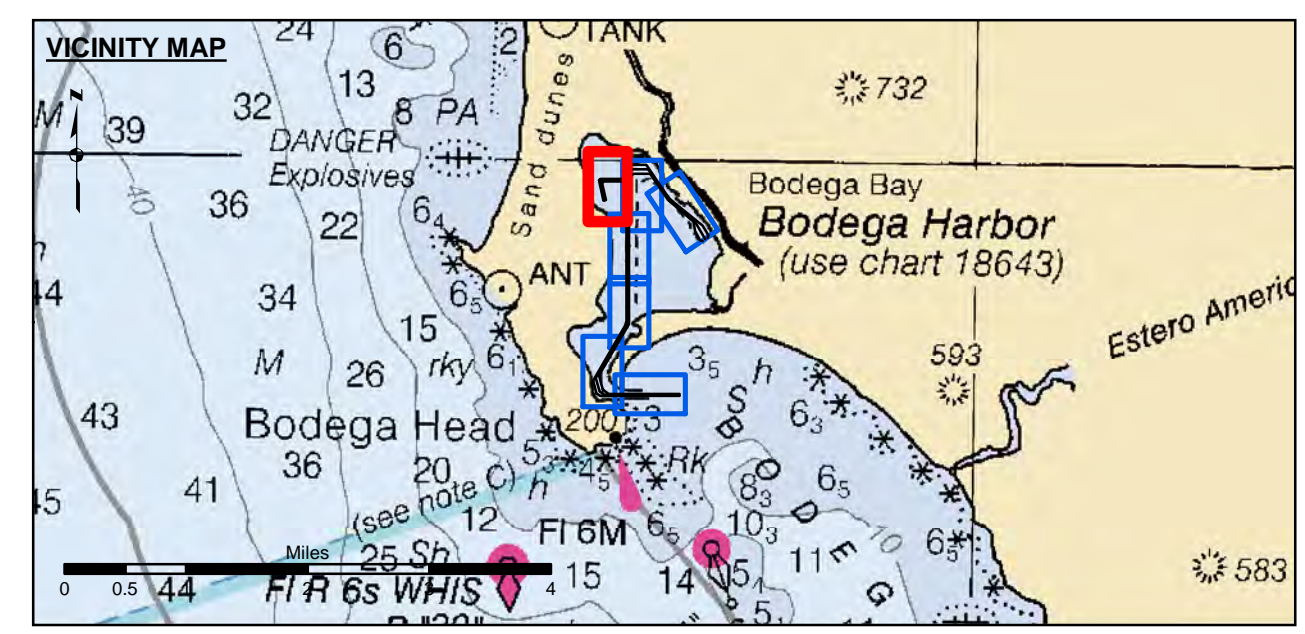


**PRELIMINARY ISSUE**  
THIS PLAN ISSUED FOR  
ADVANCE INFORMATION ONLY

**US Army Corps of Engineers**  
San Francisco District  
450 Golden Gate Avenue  
San Francisco, CA 94102

**DISCLAIMER**  
The United States Government furnishes this information for the purpose of providing accurate and reliable data. The user is responsible for the results of any application of the data for other than its intended purpose. The user is responsible for the results of any application of the data for other than its intended purpose. The user is responsible for the results of any application of the data for other than its intended purpose.

Prepared Under the Direction of <b>TIMOTHY W. SHEBESTA</b> LT COLONEL, C.E., DISTRICT ENGINEER	Chart Date: Oct 25, 2023
Subproject: Hydro Survey Team Leader	Designed by: PDT
Recommended by: Chief, Hydro Survey Section	Plotted By: PDT
Approved: Chief, Construction Branch	Checked By: PDT
	Drawn by: PDT



Federal Navigation Channel	Beacon, General	<b>Contours</b>
Shoaling Area	Obstruction Point	
Placement Area	Navigation Buoy	
Anchorage Area	Navigation Buoy	
Wreck Area	Shoalest Sounding*	
Submerged Wreck		-12
Angle Point		-11
		-10
		-9
		-8

**NOTES:**  
HORIZONTAL COORDINATE SYSTEM:  
NORTH AMERICAN DATUM OF 1983 (NAD83), PROJECTED TO THE STATE PLANE COORDINATE SYSTEM (SPCS), CALIFORNIA ZONE II. DISTANCE UNITS IN U.S. SURVEY FEET.

VERTICAL DATUM:  
SOUNDINGS ARE SHOWN IN FEET AND INDICATE DEPTHS BELOW MEAN LOWER LOW WATER.

THE INFORMATION DEPICTED ON THIS MAP REPRESENTS THE RESULTS OF A SURVEY CONDUCTED ON THE DATE INDICATED AND CAN ONLY BE CONSIDERED TO REPRESENT THE GENERAL CONDITION EXISTING AT THAT TIME.

PLANE GRID, BEARING AND COORDINATES ARE BASED ON THE STATE OF CALIFORNIA COORDINATE SYSTEM, LAMBERT CONFORMAL PROJECTION, ZONE II NAD 83, CALIFORNIA, AS DESCRIBED IN SPECIAL PUBLICATION NO. 235, PUBLISHED BY NATIONAL OCEAN SURVEY.

BASE MAPS ARE USDA NAIP 2010.

\*SHOALEST SOUNDING PER QUARTER PER REACH

DRAWING NOT TO BE USED FOR NAVIGATION. ONLY CHANNEL CONDITION AT DATE OF SURVEY. THE LOCATION OF ALL NAVIGATION AIDS ARE BASED ON INFORMATION PROVIDED BY THE U.S. COAST GUARD. BUOY LOCATIONS REPRESENT THE POSITION OF THE SINKER ONLY.

SURVEYED BY THE CORPS OF ENGINEERS.

SOUNDING FOR THE CHANNEL MEASURED WITH MULTIBEAM ECHOSOUNDER AND ARE SHOWN TO THE NEAREST TENTH FOOT.

SOUNDINGS ARE BASED ON THE DATUM OF MEAN LOWER LOW WATER AT THE LOCALITY.

THE PROJECT DEPTH IS 12 FEET.

TIDE GAUGE AT BODEGA BAY COAST GUARD STATION DOCK BASED ON ELEVATION OF 17.59' MLLW ON COAST GUARD BRASS CAP PROPERTY CORNER. ELEVATION ESTABLISHED BY DIFFERENTIAL LEVELS RUN FROM "TIDAL 4 - ROAD" USED, 1941, ELEVATION 20.05' MLLW LOCATED IN THE TOWN OF BODEGA BAY.

CALIFORNIA  
SONOMA COUNTY  
**BODEGA BAY CHANNEL**  
CONDITION SURVEY  
20 OCTOBER 2023

**Sheet  
Reference  
Number**  
**7 of 7**